

WRAP FETS Webinar 1: Data Providers

Data Management in the FETS

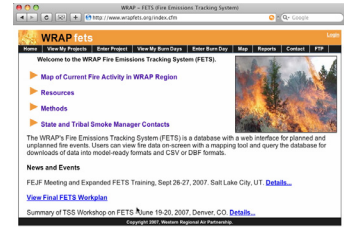
December 10, 2008, 1000 MDT

WEBINAR OBJECTIVES:

- Inform current and potential data providers to the FETS of relevant features and functions.
- Identify potential data providers and initiate contact to create new data handshakes.

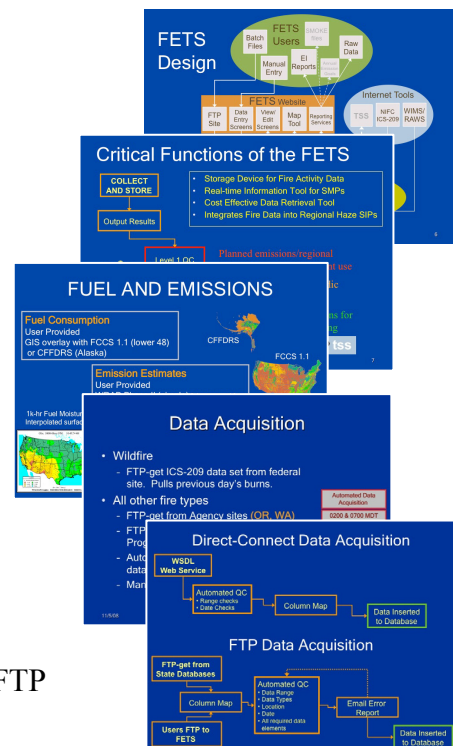
1. Opening Remarks

- a. The [Fire Emissions Tracking System \(FETS\)](#) was built for Western Regional Air Partnership ([WRAP](#)) states and Tribes and is intended for regional coordination of fire activity and storage/retrieval of fire activity and emissions data.
- b. FETS is a “commodity based” system requiring only access to the Internet to upload, view, and report data.
- c. FETS can accept data pertaining to any fire type (e.g., wildfire, prescribed fire, agricultural burning, rangeland burning) in any geographic area.
- d. “New provider” tasks are few: establish the handshake to submit data to the FETS; training on the use of the FETS; customizing data fields and queries to meet user-specific needs.



2. FETS design and functions

- a. Commodity-based, modular design
- b. Critical functions
- c. The FETS Technical Node
 - i. GIS Functions
 - ii. Fire Science
- d. Data Acquisition
 - i. Methods
 - ii. Examples
 - Montana/Idaho Web Service
 - Oregon Dept of Forestry FTP
 - Nez Perce Tribe Excel manual FTP



3. Data Acquisition and Storage

- a. [Log in](#) as “webinar”, password “webinar5” to follow along.
- b. Minimum required data elements (per WRAP policy):

Location Date Size Source Type Burn Type

c. Review of current data upload methods

- i. Manual data entry
- ii. Batch file [FTP upload](#)
- iii. Automated data-mining

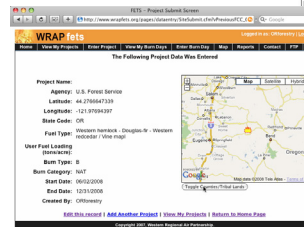
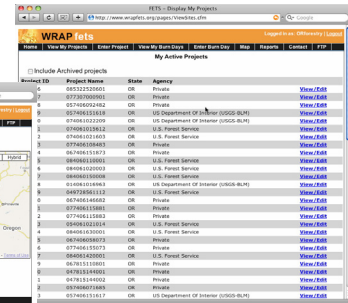
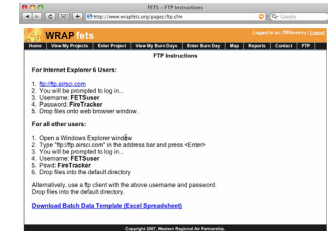
d. Quality Control for uploaded data

- i. Automated Error checking
- ii. Email error reports

e. Example batch upload

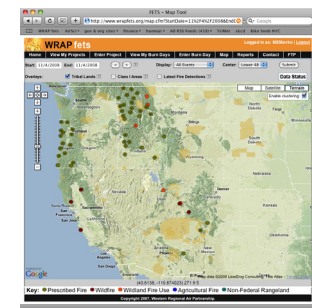
f. Organization of fire data in the FETS database

g. [View/edit](#) data on the website



4. Regional Coordination Tools

- a. Mapping Tool [page](#)
 - i. Fire icon clusters
 - ii. Tribal, Class I areas overlays
 - iii. Summarize by county, state
 - iv. MODIS fire detections

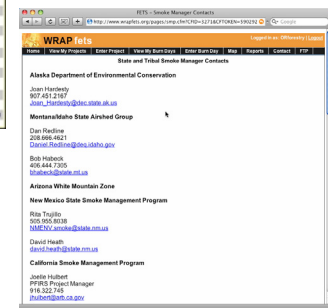


b. Data Acquisition Status Table

- i. Date of last acquisition
- ii. Acquisition by fire type
- iii. Data coverage

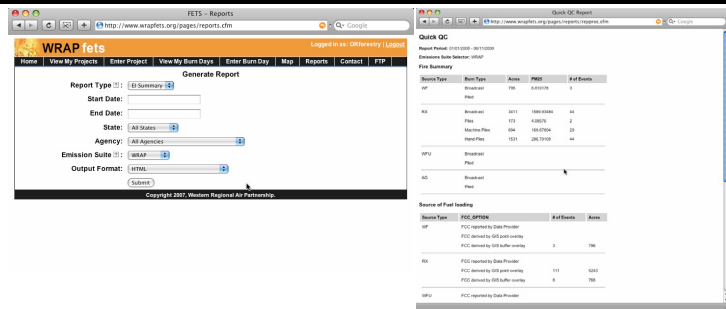
Source	WF	WPU	EX	AG	NFR	Last	Status
2013-2014						04/14/2014	WRAP State
AR						N.D.	No Data
CA						N.D.	No Data
CO						N.D.	No Data
DE						N.D.	No Data
FL						N.D.	No Data
GA						N.D.	No Data
IA						N.D.	No Data
IL						N.D.	No Data
IN						N.D.	No Data
KS						N.D.	No Data
LA						N.D.	No Data
MA						N.D.	No Data
MD						N.D.	No Data
MI						N.D.	No Data
MN						N.D.	No Data
MO						N.D.	No Data
MT						N.D.	No Data
ND						N.D.	No Data
OR						04/14/2014	WRAP State
RI						N.D.	No Data
SC						N.D.	No Data
SD						N.D.	No Data
TN						N.D.	No Data
TX						N.D.	No Data
VA						N.D.	No Data
WV						N.D.	No Data
WY						N.D.	No Data

c. SMP Contacts [page](#)



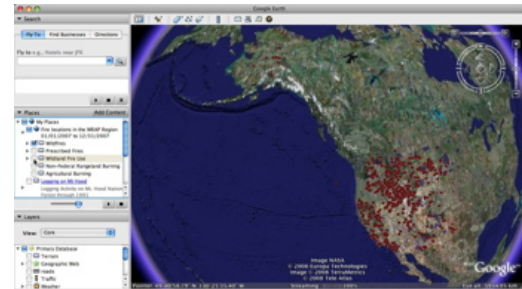
5. Reporting Features

a. On-screen [reports](#)



b. XLS downloads

c. Google Earth



6. Closing Remarks.

a. Matt Mavko will coordinate with new data providers.

b. Questions, Comments, and other Feedback.

CONTACT INFORMATION:

WRAP – Tom Moore, Technical Coordinator
w/ 970.491.8837 e/ mooret@cira.colostate.edu

Air Sciences – Dave Randall, Principal
w/ 303.988.2960 x221 e/ drandall@airsci.com

Air Sciences – Matt Mavko, Air Quality Scientist/GIS Specialist
w/ 503.525.9394 x115 e/ mmavko@airsci.com